



VEHICLES AFFECTED: The service bulletin applies to all vehicles manufactured before June 4th, 2009 which applied to any vehicle with VIN #442 and lower. Any bikes built after June 4th, 2009 with VIN # higher than VIN #443 already have this adjustment made to the vehicle from the factory.

KIT #- 90600010

KITS: Wire Harness Routing kits will be sent to each dealer containing affected bikes.

Each kit contains the following:

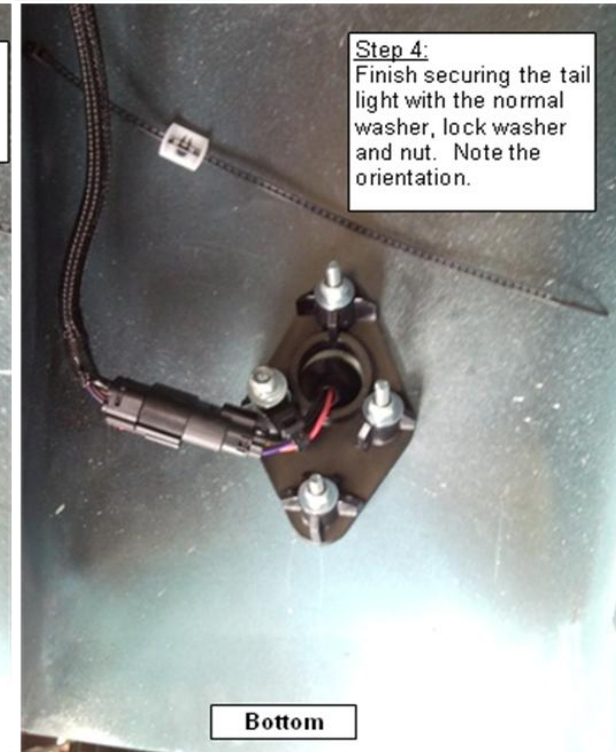
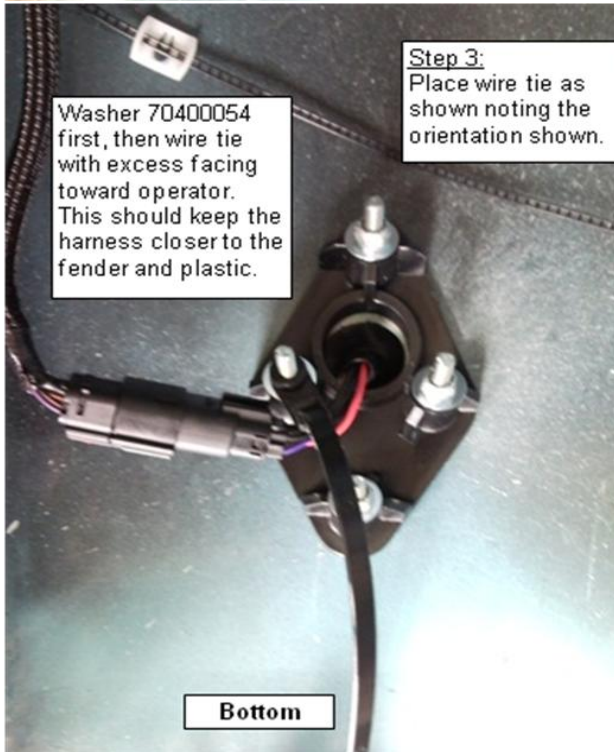
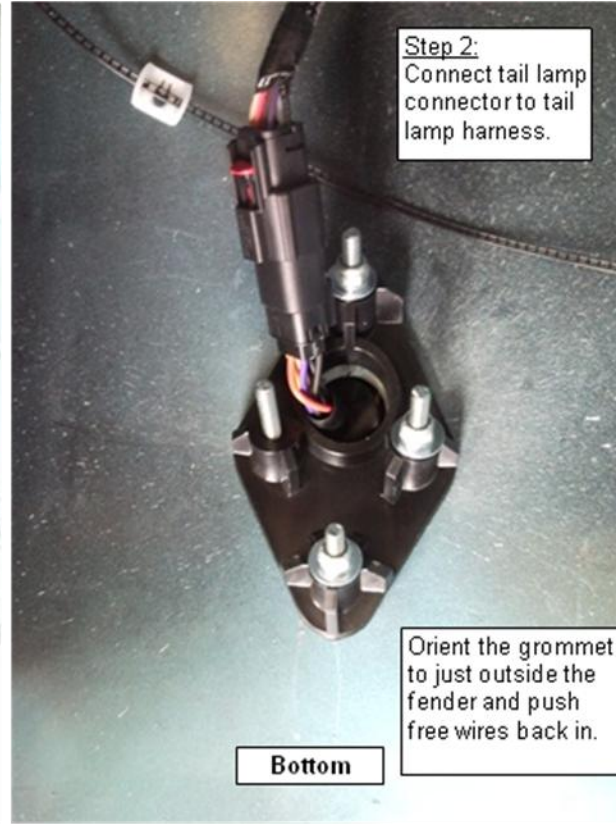
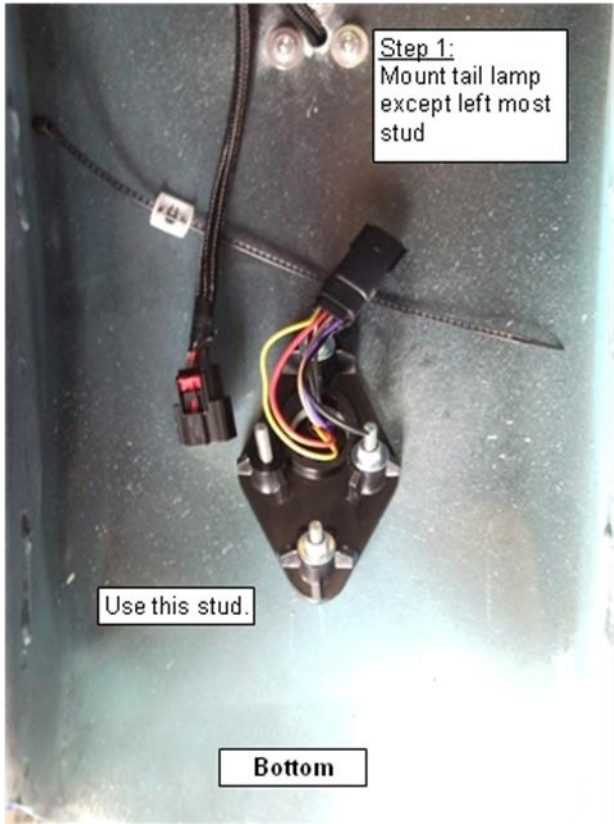
Quantity	Part #	Description
1	71000002	Stud Mount Wire Harness Retention clip with 8" zip tie
1	70400054	washer
1	Wire Harness Routing II – Service Bulletin #007	Instructions for Wire Harness Routing II – Service Bulletin #007

Procedure	Labor Rate
Wire Harness Routing II	0.2 hrs

Instructions

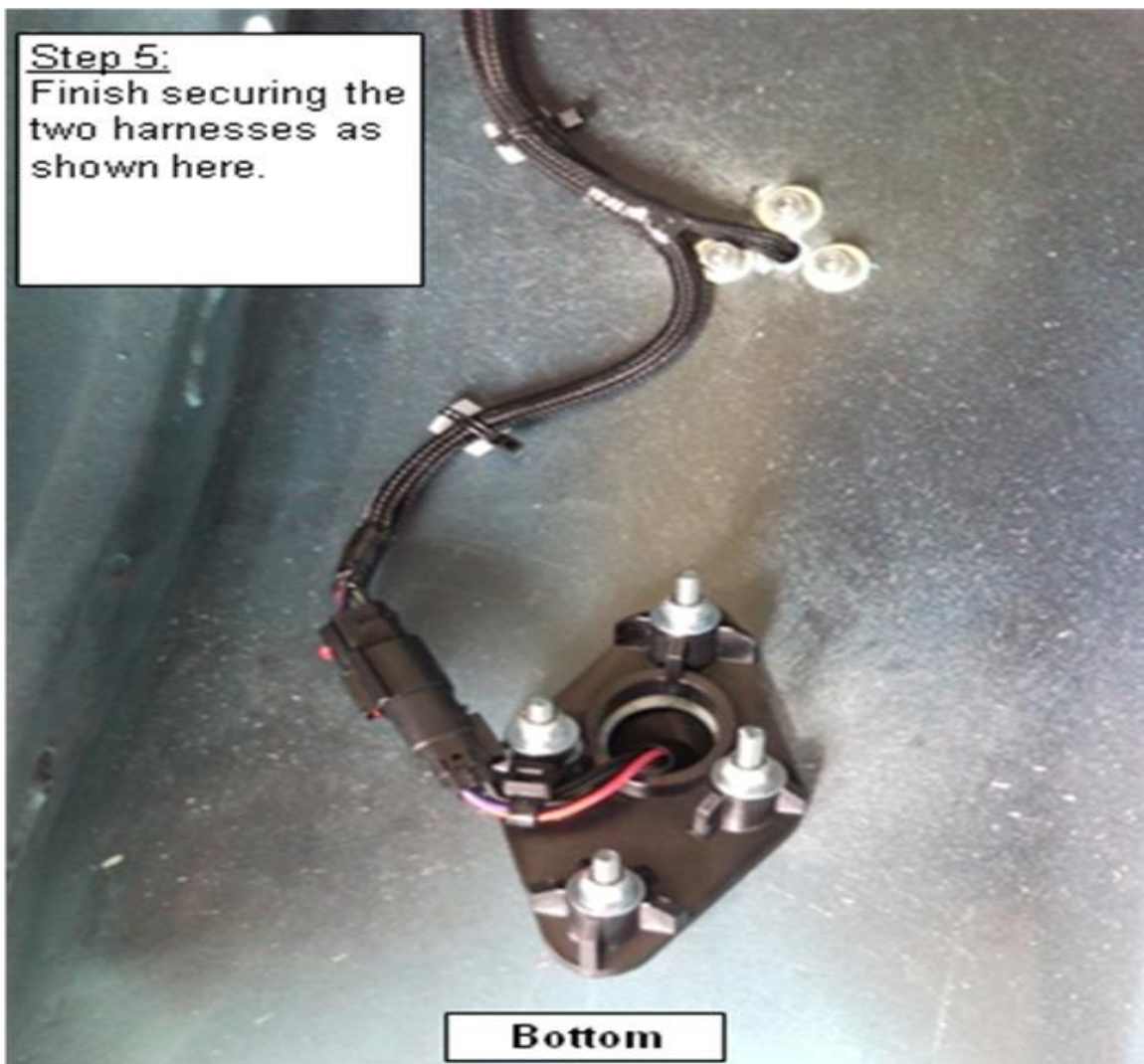
1. Remove the lower left tail light nut lock washer and flat washer from back of rear fender. *See figure 1*
2. Install washer (pn# 70400054) on stud. *See figure 1*
3. Connect tail lamp connector to tail harness if necessary. *See figure 2*
4. Install zip tie mount over washer and orientate to 5 o'clock position. *See Figure 3*
5. Cut zip tie and install washer, lock washer and nut removed in step 1. *See Figure 4*
6. Torque fastener to 70-90 inch lbs.
7. Secure harness as shown in figure 5.

Note: Typical distance from back of connector to wire tie is 0.5inches - 1.5 inches.





Step 5:  
Finish securing the  
two harnesses as  
shown here.



Bottom