



INSTRUCTIONS

Kit Number:

90500282 REV A

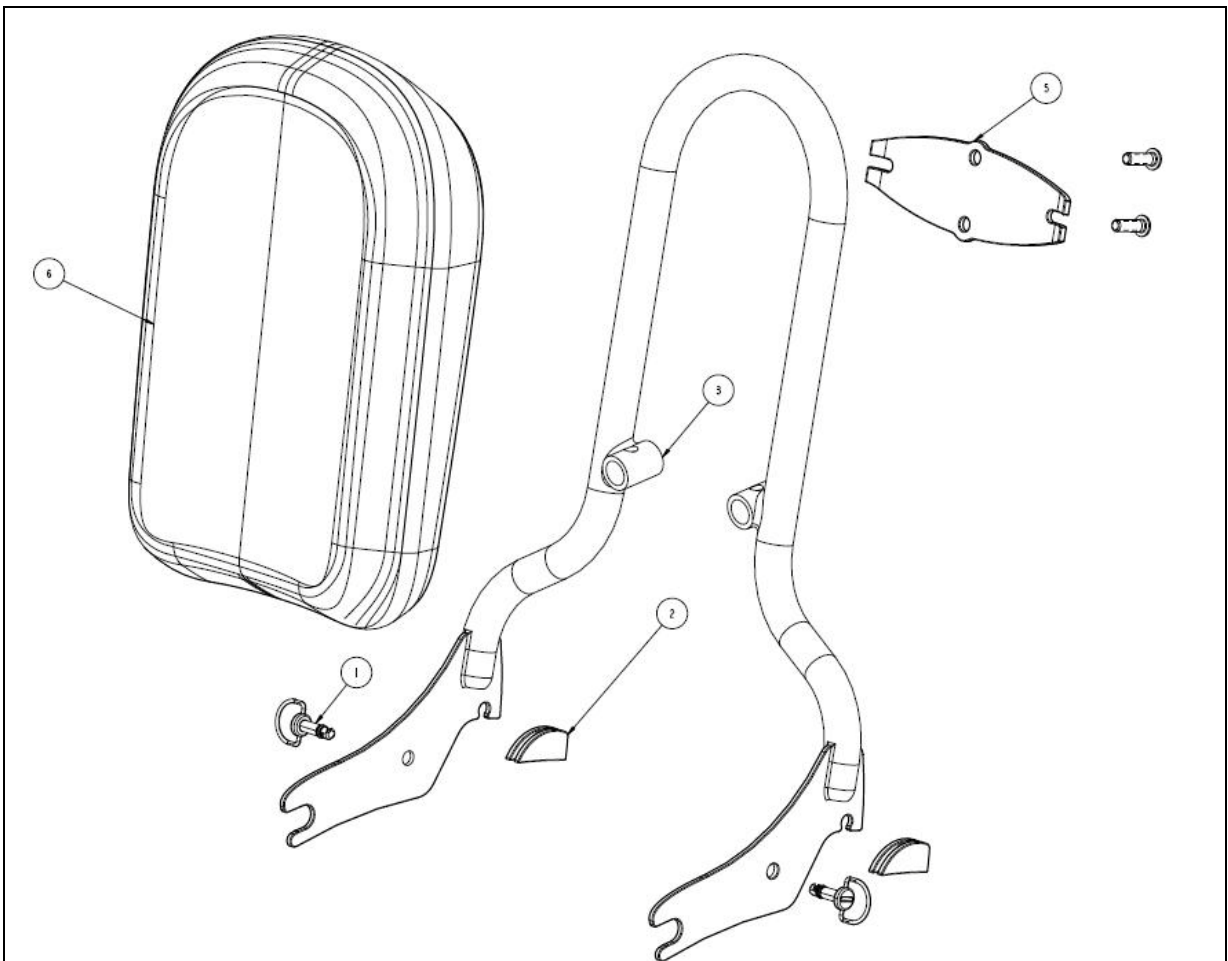
Kit Description:

The Quick Detach Backrest Support Kit, includes Backrest Support, Compression Springs, and ¼ Turn Fasteners. Assembly of a full Backrest requires use of additional kits and components, including a Backrest Pad selection and a Backrest Pad Mount Bracket Kit selection.

Installation Instructions:

1. Install backrest pad and mount kit (see separate kit and instructions)
2. Install bag/ quick detach mount kit (#90500270) if needed
3. install compression springs(2) onto detachable sissy bar (3)
4. Install backrest support onto detachable mount kit on motorcycle
5. Lock into place with ¼ turn fasteners (1)

Exploded View of Assembly:



Kit Bill of Material:

ITEM	PART NUMBER	PART DESCRIPTION	QTY
1	70200003	6mm ¼ Turn Stud, 18mm Long, CHR	2
2	51600097	Compression Spring, Black	2
3	51600095	Detachable Sissy Bar	1
x	90800081	Backrest Installation Instruction Sheet	1

Additional Kit Requirements:

ITEM	KIT NUMBER	KIT DESCRIPTION	QTY
	Select from Below	BACKREST PAD	X
6	53100000	Red, Smooth, No Fringe, Backrest Pad	1
6	53100002	Black, Smooth, No Fringe, Backrest Pad	1
6	53100004	Tan, Smooth, No Fringe, Backrest Pad	1
	Select from Below	PAD MOUNT BRACKET KIT	
5	90500283	Backrest Pad Mount Bracket Kit, Indian Script	1

Kit Retro-fit-ability to Existing Models:

Y: Directly Retro-fit-able

M: Retro-fit-able with some modification, see your local service provider for details

N: Not Retro-fit-able

MODEL YEAR	MODEL FAMILY					
	CHIEF	SCOUT	N/A	N/A	N/A	N/A
1998	N	N				
1999	N	N				
2000	N	N				
2001	N	N				
2002	N	N				
2003	M	N				
2004	M	N				
2009 +	Y	N				

Disclaimer:

To help maintain the value of your motorcycle and to keep from voiding your factory warranty, please remember that skilled technicians using equipment and methods recommended by IMC are best qualified to perform all major repairs and service including installation of Parts and Accessories. Your authorized Indian Motorcycle Dealer knows your motorcycle best and should be consulted for service and assistance.