



# INSTRUCTIONS

**Kit Number:**

90500230 REV A

**Kit Description:**

This kit includes A chrome Highway Bar and Fasteners.

**Installation Instructions:**

Removal for all models except Chief Vintage

1. Remove two plugs in upper frame bracket

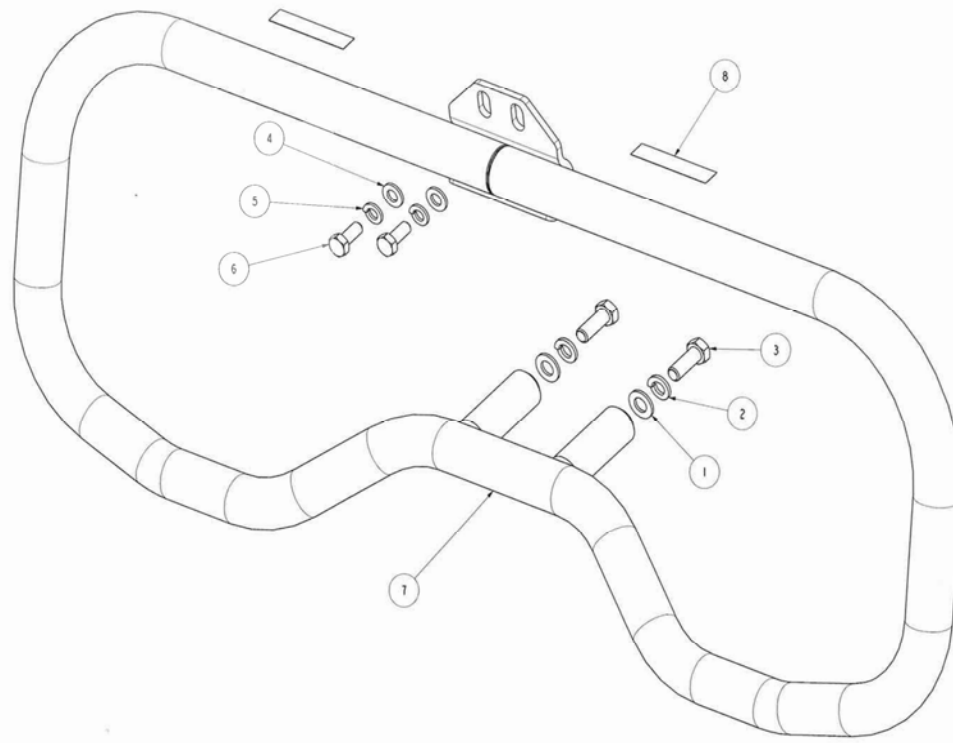
Removal for Chief Vintage models

2. Remove upper mounting fasteners (6) and washers (4,5) Discard.
3. Remove lower mounting fasteners (3) and washers (1,2) Discard
4. Remove highway bar.

Installation

1. Install highway bar with upper mounting fasteners (6) and washers (4,5).
2. Torque to 16-20 lbs. ft
3. Install lower mounting fasteners (3) and washers (1,2).
4. Torque to 27-33 lbs. ft

**Exploded View of Assembly:**



**Kit Bill of Material:**

ITEM	PART NUMBER	PART DESCRIPTION	QTY
1	70496895	3/8 FLT WSHR, TYPE B-N, STL, Z/C	2
2	70496904	3/8 LOCK WSHR, SPLIT, REG, Z/C	2
3	70196173	3/8-16 X 1.00 HHCS, G8, Z/C	2
4	70496896	5/16 FLAT WSHR, TYPE B-N, STL, Z/C	2
5	70400048	5/16 LOCK WASHER, SPLIT, REG, Z/C	2
6	70100003	5/16-18 X 0.75 HHCS, G8, Z/C	2
7	53200000	HIGHWAY BAR ASSY	1
8	80200009	HIGHWAY BAR, WRN	2
9	90800041	INSTR, HIGHWAY BAR	1

**Additional Kit Requirements:**

KIT NUMBER	KIT DESCRIPTION	QTY
XXXXXXXX1	Description of Required Kit 1	X
XXXXXXXX2	Description of Required Kit 2	X
XXXXXXXX3	Description of Required Kit 3	X

**Kit Retro-fit-ability to Existing Models:**

Y: Directly Retro-fit-able

M: Retro-fit-able with some modification, see your local service provider for details

N: Not Retro-fit-able

MODEL YEAR	MODEL FAMILY					
	CHIEF	SCOUT	N/A	N/A	N/A	N/A
1998	N	N				
1999	N	N				
2000	N	N				
2001	N	N				
2002	N	N				
2003	N	N				
2004	N	N				
2009 +	Y	N				

**Disclaimer:**

To help maintain the value of your motorcycle and to keep from voiding you factory warranty, please remember that skilled technicians using equipment and methods recommended by IMC are best qualified to perform all major repairs and service including installation of Parts and Accessories. Your authorized Indian Motorcycle Dealer knows your motorcycle best and should be consulted for service and assistance.