



INSTRUCTIONS

Kit Number:

90500330 REV A

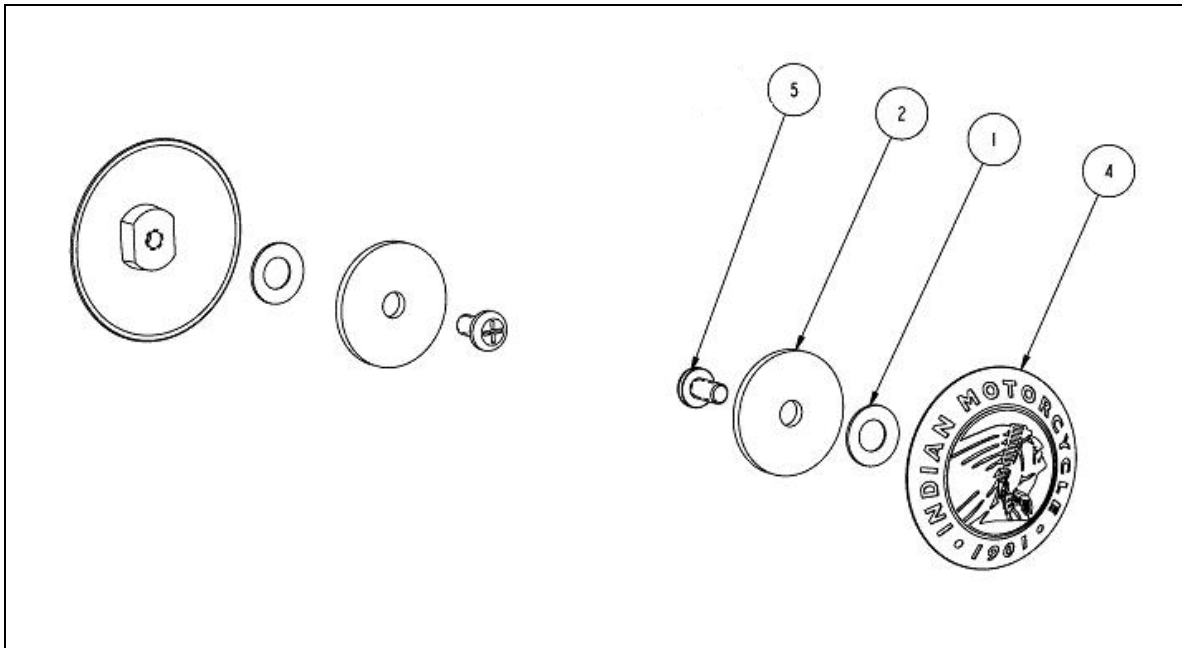
Kit Description:

The Concho Installation Kit includes all fasteners, fender washers, and spring washers required to install conchos to a rider seat. Specific Concho design selection is required.

Installation Instructions:

1. Seat removal is not necessary
2. Install fastener (5) and washer (2) from backside of seat.
3. Apply small amount of blue loctite or equivalent to fastener
4. Install medallion (4) and washer (1) on outside of seat
5. Align medallion for correct orientation
6. Tighten fastener 5-10 lbs. inch
7. Repeat for other side

Exploded View of Assembly:



Kit Bill of Material:

ITEM	PART NUMBER	PART DESCRIPTION	QTY
1	70400043	1/4" ID Spring Washer, Stainless Steel, .023" Thick	2
2	70400053	3/16 Fender Washer, Steel, Zinc Clear	2

3	90800145	Instructions, Concho Installation	1
4	SELECT BELOW	Medallion, Headdress and Fasteners (Ref. Only)	2
5	REF ONLY	#8-32X.3125, Philips, Zinc Clear	2

Additional Kit Requirements:

ITEM	PART NUMBER	PART DESCRIPTION	QTY
	Select From Below	MEDALLION SELECTION	X
4	73300000	Medallion, Headdress and Fasteners	2
4	73362109	Medallion, Indian Script and Fasteners	2

Kit Retro-fit-ability to Existing Models:

Y: Directly Retro-fit-able

M: Retro-fit-able with some modification, see your local service provider for details

N: Not Retro-fit-able

MODEL YEAR	MODEL FAMILY					
	CHIEF	SCOUT	N/A	N/A	N/A	N/A
1998	N	N				
1999	N	N				
2000	N	N				
2001	N	N				
2002	N	N				
2003	M	N				
2004	M	N				
2009 +	Y	N				

Disclaimer:

To help maintain the value of your motorcycle and to keep from voiding your factory warranty, please remember that skilled technicians using equipment and methods recommended by IMC are best qualified to perform all major repairs and service including installation of Parts and Accessories. Your authorized Indian Motorcycle Dealer knows your motorcycle best and should be consulted for service and assistance.